

ESTIMATE No.:

Los Angeles,

| | | | |
|---------------------|--|-------------------------|--|
| Client: | | Contact: | |
| Telephone: | | C e l l - Phone: | |
| E-mail: | | Fax: | |
| Address: | | Zip Code: | |
| City, State: | | Country: | |

Kaitian - Model: Engraving & Cutting Laser System CM1309SH – 1 Head

One (01) KT Laser tube - 130 Watts



Large worktable (51" x 35" x 10") and rear pass-thru allows easy the loading of materials such as bulk rolls or full 4'x 8' or 4'x10' sheets.

USEFUL LIFE OF OUR LASER MACHINE:

Cutting and engraving laser systems - The best warranty system - The nearest and fastest technical services & spare parts

The high quality, RELIABILITY AND PROFITABILITY of our CM1309SH is supported by our Research and Development Department with more than 30 expert engineers, masters and doctors in physics and electronic sciences of the laser technology and manufactured in accordance with the programs QB/T1700-2001 and ISO9001: 2000.

| LASERABLE MATERIALS | | | | | |
|------------------------------------|-----|---------|--------------------------------------|-----|---------|
| MATERIALS | CUT | ENGRAVE | MATERIALS | CUT | ENGRAVE |
| PAPER | ✓ | ✓ | MYLAR | ✓ | ✓ |
| CARDBOARD | ✓ | ✓ | PLASTIC | ✓ | ✓ |
| PRESSBOARD | ✓ | ✓ | SILICON WRISTBANDS/BRACELETS | ✓ | ✓ |
| FOAM BOARD | ✓ | ✓ | RUBBER (Gum elastic or India rubber) | ✓ | ✓ |
| CORK | ✓ | ✓ | DELFIN | ✓ | ✓ |
| MATTE BOARD | ✓ | ✓ | ACRYLIC | ✓ | ✓ |
| MDF (Pressed cardboard) | ✓ | ✓ | CORIAN | ✓ | ✓ |
| TEMPERED HARDBOARD | ✓ | ✓ | MELAMINE | ✓ | ✓ |
| PLYWOOD (Pressed Wood) | ✓ | ✓ | FIBERGLASS | ✓ | ✓ |
| WOOD VENEER | ✓ | ✓ | GLASS (TEMPERED) AND CRYSTAL | | ✓ |
| WOOD | ✓ | ✓ | CERAMICS | | ✓ |
| FABRIC, DENIM | ✓ | ✓ | MARBLE, ONIX and STONES | | ✓ |
| FELT, TACKLE TWILL | ✓ | ✓ | TILE | | ✓ |
| COTTON FABRIC AND MIXED FIBERS | ✓ | ✓ | PAINTED METALS | | ✓ |
| FABRIC WITH THICK SYNTHETIC FIBERS | ✓ | ✓ | COATED METALS | | ✓ |
| LYCRA AND OTHER SYNTHETIC FABRICS | ✓ | ✓ | ANODIZED ALUMINUM | | ✓ |
| NATURAL AND SYNTHETIC LEATHER | ✓ | ✓ | BARE METALS | | ✓ |
| SUEDE, FLEECE | ✓ | ✓ | | | |

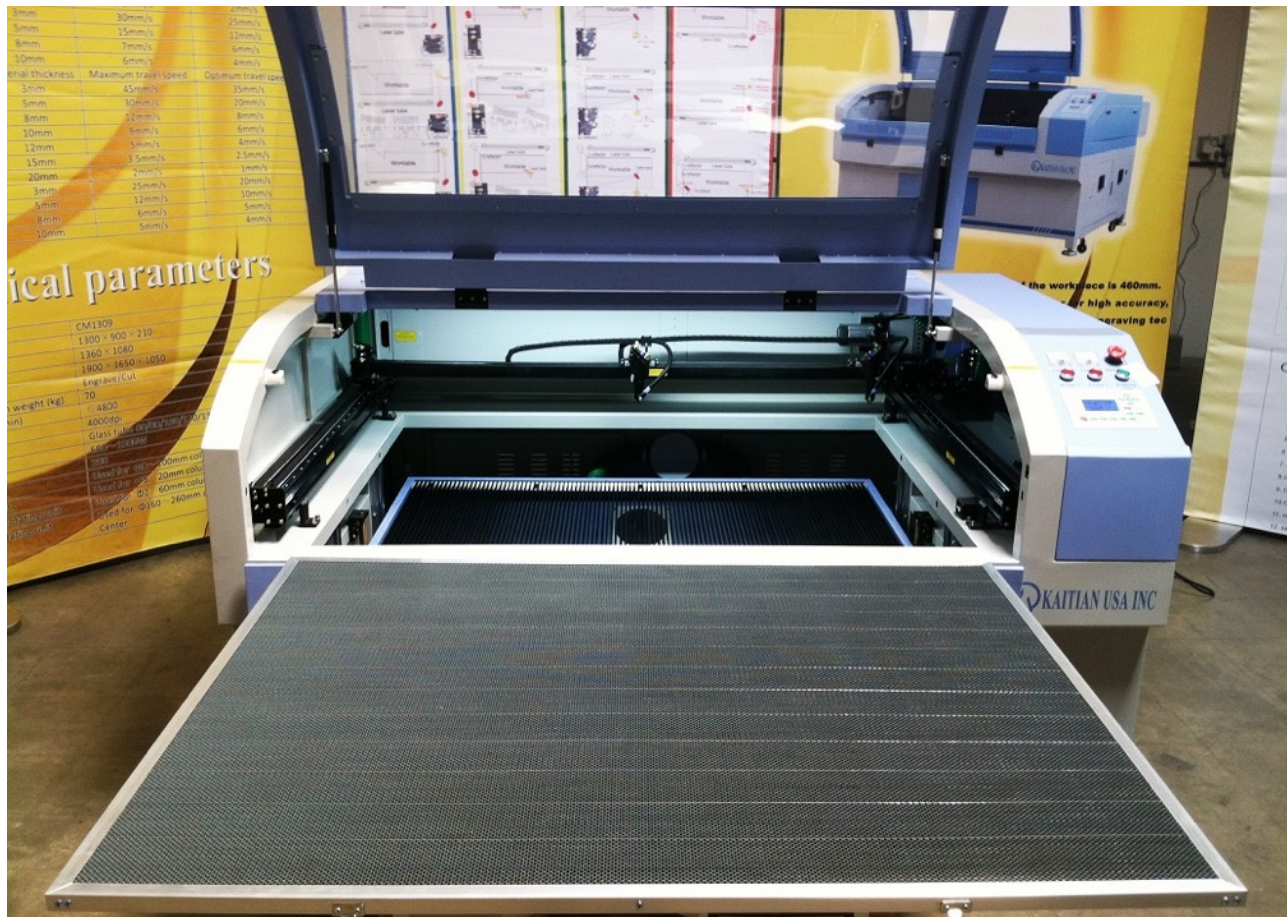
| GENERAL TECHNICAL FEATURES | |
|----------------------------|-------------------------------------------------------------------------------------------------|
| Engraving speed | 0-42 (inches/seg) depending the material to engrave. |
| Cutting speed | 0-23 (inches/seg) depending the material to cut. |
| Cutting thickness | 3/4 Inches or more (0-25 mm) depending the material to cut, and the the power and laser lens. |
| Resolution | Up to 4000 DPI (the regular use is between 600DPI y 2000DPI). |
| Minimum Configuration | Characters 0.07 x 0.07 Inches and letters 0.039 x 0.039 Inches (2 x 2 mm. and letters 1 x 1 mm) |
| Precision tolerance | 0.00039 Inches (0.01 mm) |
| Operating Temperature | 40°F - 113°F (0°C - 45°C) |
| Operating Humidity | 5% - 95% without water condensation |
| Power Consumption | 1,250 Watts |
| Voltage | 220 Volts 50 / 60 Hz |
| Port | USB 2.0 |

KAITIAN LASER MACHINE - MODEL CM1309SH - 130W KT, includes:

1. THE MOST PROFITABLE WORK AREA:

Two worktable sets 51" x 35" x 10": (1) honeycomb to cut thinnest material (fabric, paper, etc.) and (1) Stripped to cut hard and inflammable materials (acrylic, wood, foam, etc.) and getting the cleanest edge cut. The Up/Down work table can fit pieces of 10" deep. Also, you can remove both worktable and reaching 20" deep. It is powered by two motor Up/Down worktable with speed control, it can load 200 pound.

The best price in the market: \$7.84 per square inch and \$0.78 per cubic inch.



AREA: Effective work area: **51 x 35 x 10 inches.**

2. ONE LASER TUBE:

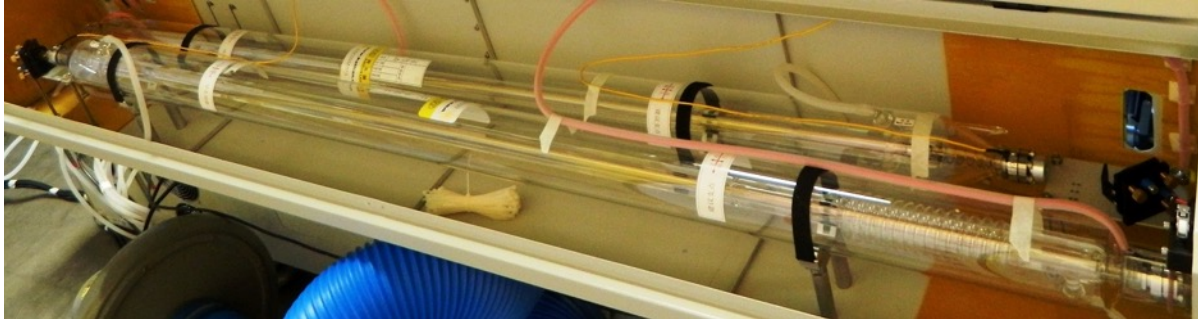
Laser tube 130W RC-KT: Real power to cut until 1 -1/8" (30 mm.) thick acrylic - more than any other laser machine - and taking in advantage the high speed of servo motors, you can get the double of production than other laser machines of One head.

Our laser tube 130W RC-KT is manufactured by us and our technology to get until 10,000 working hours and the replacement is just \$1,200.00; this means you are paying just \$0.92 per Kilowatts by hour, better than any other.

Emits a perfect laser beam. Easier alignment system, the laser tube lies up on stable and adjustable stands.

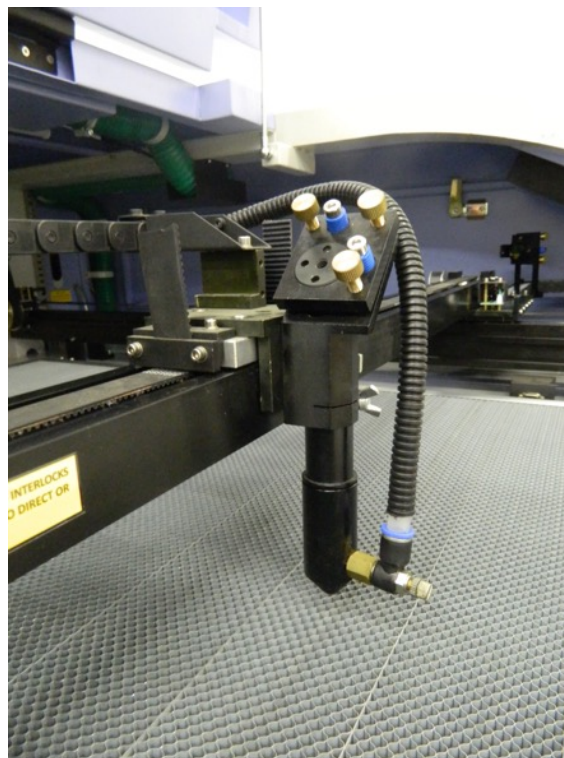
Protection system to avoid sparks... better than others.

The best price in the market: \$0.92 per Kilowatts - hour



3. ONE LASER HEAD:

Efficient transmission laser beam system: The perfect laser beam comes from the laser tube... the silicon mirrors reflect the 99% of the power and the American laser lens doesn't absorb power, allows the pass of energy focused in the point of work.



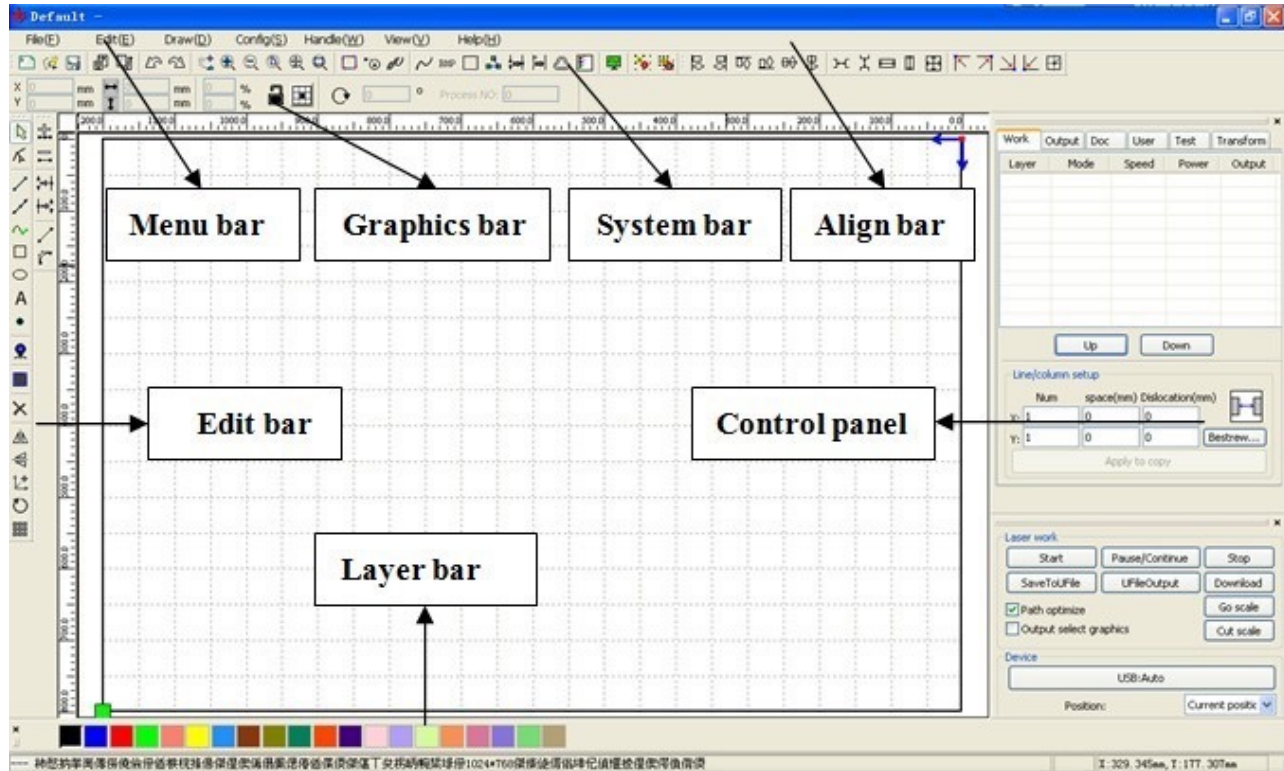
4. SOFTWARE AND WORKING CONTROL:

Cutting and engraving laser systems - The best warranty system - The nearest and fastest technical services & spare parts

The CM1309SH communicates via its USB 2.0 port to a computer and its control software. Similar to outputting to a printer, this makes it easy to manage various parameters such as power, speed and resolution in order to achieve the desired results. The controller software is included at no additional charge.

FORMATS SUPPORTED BY THE SOFTWARE:

It supports practically all standard graphic design formats: bmp, gif, jpg, pcx, cad, tga, tiff, plt, cdr, dmg, dxf and dst.



5. LASER HEAD X-Y-Z AXIS POSITIONING SYSTEM

Its Laser head positioning system is fast and extremely accurate thanks to its components. Its steel gantry rails and laser head movement system is made in Korea and its electronic controller motors are made in Japan.

